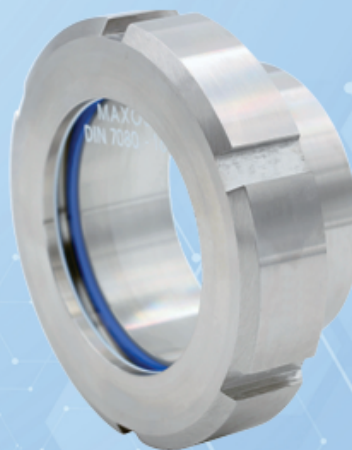




## Welding in or on similar to DIN 11851 / EN 10357

Type  
327[illegible]



LUMIGLAS

## Screwed sight glass PN 10

Welding in or on similar to DIN 11851 / EN 10357

Type  
327

### PRODUCTCODE:

Group	TYPE	DN	Socket/ Groove nut*	Glass	Gasket	Variant
11	327	25	1: 1.4404	1: Borosilicate glass (Boro) DIN 7080	1: PTFE	Assigned by LUMISTAR if required
		32	2: 1.4301/7	3: Borosilicate glass DIN 7080	2: FKM	
		40		+ PTFE wiper	3: NBR	
		50		5: Borosilicate glass DIN 7080	5: Silicone	
		65		+ silicone wiper	6: EPDM	
		80			8: Special	
		100				
		125				
		150				

**INFO:** Unless otherwise stated, the factory standard highlighted is supplied.

\*Slot nut according to quotation / order actuation.

### ACCESSORIES:

- a) Wiper SGW with PTFE or silicone wiper blade
- b) LED lights, for Ex- and Non-Ex-areas
- c) Mica protection



### EXAMPLE:

11-327-100-1-1-1-000 equivalent to:  
LUMISTAR Type 327

DN 100

Socket out of 1.4404

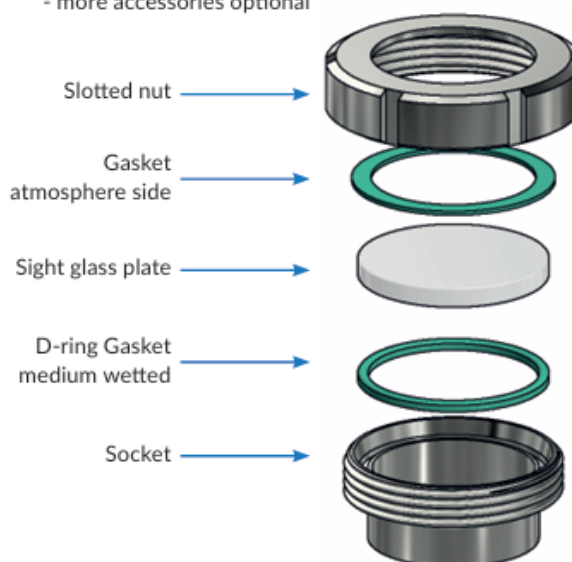
Groove nut out of 1.4404

Borosilicate glass DIN 7080

Gasket PTFE

Standard design

- more accessories optional



### RECOMMENDATION:

For aggressive media or steam, mica discs should be used to protect the glass.

Lumistar Special Glass Technology Co., Ltd.

✉ E-Mail: [lumistar@l88.com](mailto:lumistar@l88.com)

🌐 Website: <https://js-lumiglas.com/>

WhatsApp: Alice +8618913039268/Sophia +8618913035768